

BOXER BX 200

Super compact short-run boxmaker, for single and double flutes corrugated board, with optional digital print

BOXER BX 200:

- Line cut for over 50 box styles
- Automatic 60 second set up with no tooling
- Inline digital print option

OPTIONS:

- TF 200 Table feeder
- DP 200 Inline digital printing
- NG 200 Inline gluing

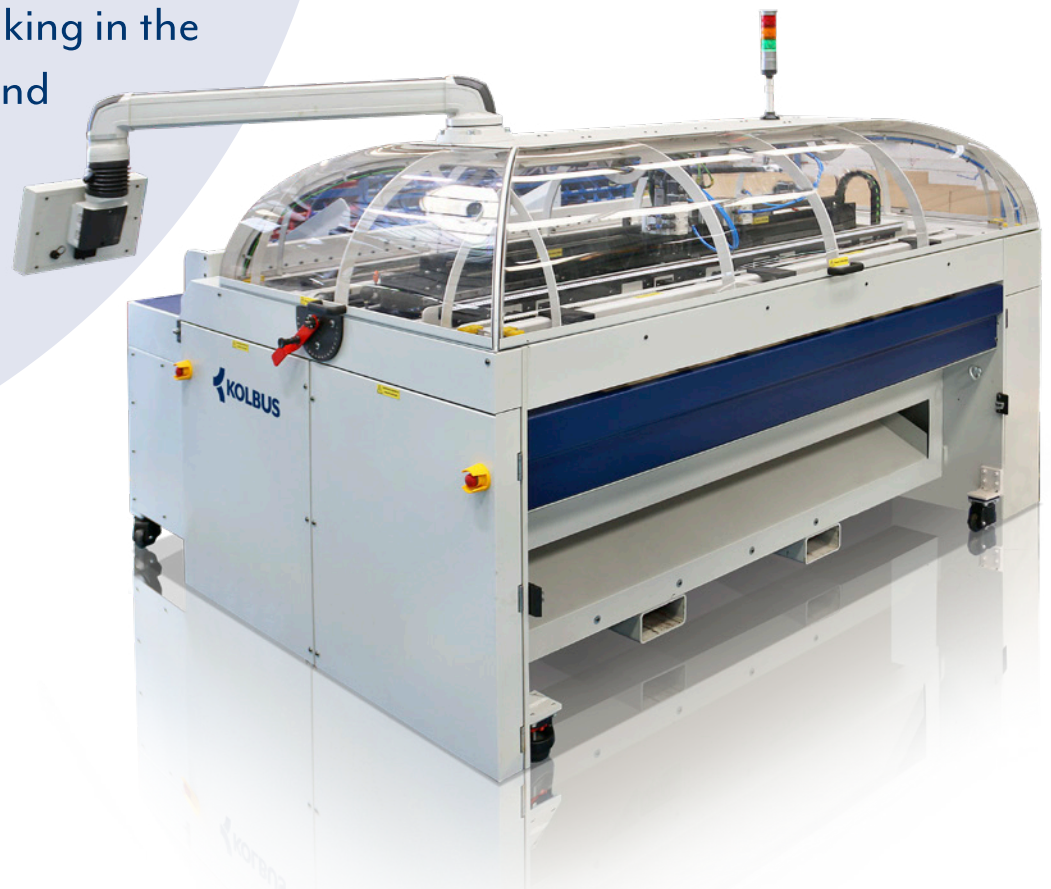
60 second
set up



Technical data

BOXER BX 200

In house boxmaking in the palm of your hand



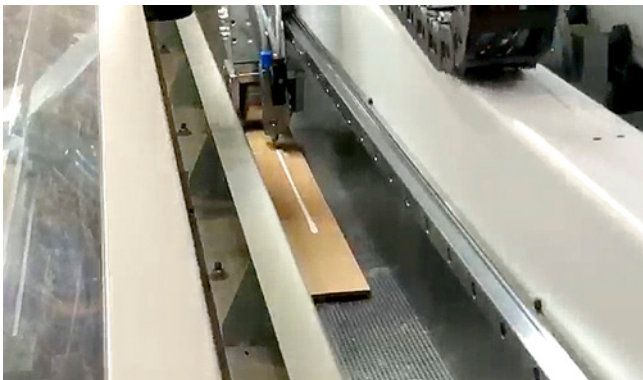
Basic equipment

- Uses sheet corrugated board
- Produce boxes on demand, with no need for prior box making experience
- Single and double wall corrugated
- Makes rugged 'industry standard' boxes
- Produces 50 box styles from wraps to pallet boxes in almost any size
- Max speed of 80 m/min
- Frees up valuable space by reducing the amount of stock boxes you need to hold
- Inline digital print available
- Only need to stock a handful of basic sizes and grades of corrugated sheet
- Ultra compact state-of-the-art technology
- Reliable and easy to use
- Built and supported by KOLBUS AutoBox - Over 40 years at the forefront of box making technology
- MANUAL INPUT – Via touch screen
- REMOTE INPUT – Connect and control via the office PC or your mobile devices

Inline Digital Print, type DP 200

The Digital-Print module offers fully integrated, single colour print, inline. This superbly engineered addition uses a system of up to four individual, motorised self cleaning print heads to deliver all manner of print requirements. Printing is programmed via the touch screen interface as part of the box making set up for added speed and efficiency.

- o Integrated inline solution
- o High resolution print - 360 dpi
- o Make and print up to Jumbo sized boxes in a single pass
- o Quick cure ink



Nozzle Gluer, type NG 200

The module is used for fully automatic gluing of selected areas (gluing fold) of a corrugated board.

- o Standard equipment
- o Cold glue
- o Glue flap crush
- o Machine dimensions: L 580 mm | W 3304 mm | H 1670 mm



Table Feeder, type TF 200

A high grip friction feeder across the width of machine allows for auto-feeding of board.



PRO-GLUER PG 100

Simple to use, fast set-up, high output, semi-automatic box gluer.

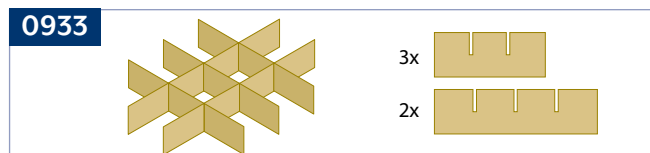
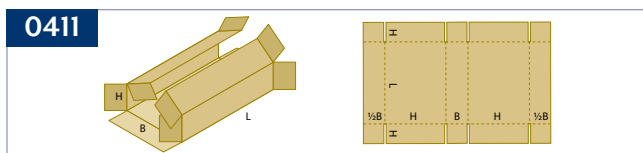
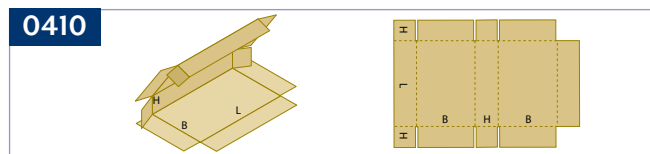
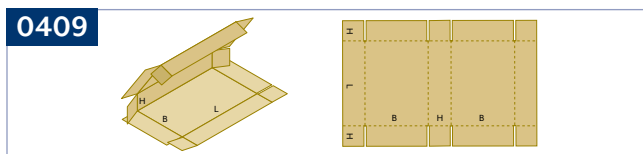
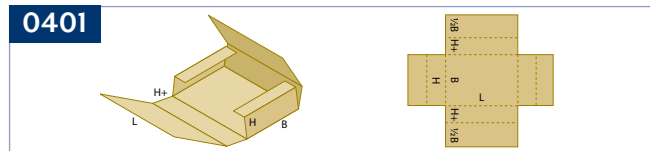
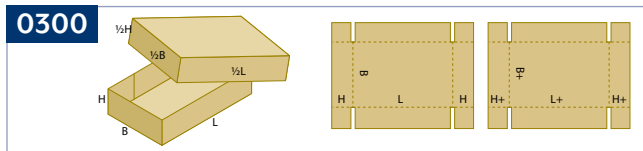
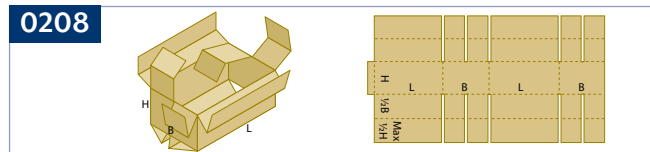
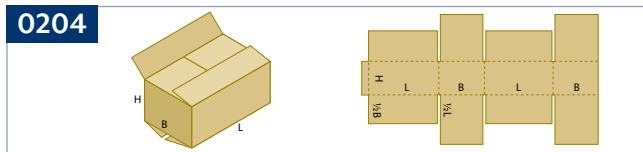
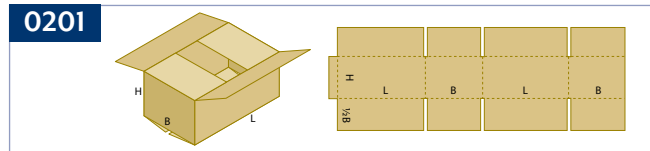
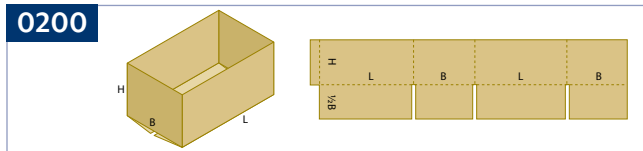
Runs at variable speeds up to 30 metres per minute

- o Standard cold PVA adhesive in easy-clean reservoir
- o Simple to set up and to operate with minimum training
- o Programmable batch counter with alarm
- o Powered entirely with single phase supply

PRO-MELT PM 100

With the Pro-Melt you can apply a measured amount of hot-melt adhesive across the whole length of the glue flap to provide optimum contact surface with excellent adhesion, every time.

Box styles



Many more styles possible - Contact KOLBUS for a comprehensive list

Format data: BOXER BX 200

- Sheet width min. 120 mm | max. 1950 mm
- Blank length: min. 500 mm | max. 8000 mm
Option Digital Print blank length: min. 450 mm
- Blank material: Corrugated board
single and double flutes
- Material thickness: min. 1 mm | max. 10 mm
- Slotting length: min. 200 mm | max. 500 mm
- Slotting distance: min. 100 mm
- Slotting width: min. 7 mm

Digital Printer Format data: DP 200

- Print width: 140 mm | 280 mm | 420 mm | 560 mm
- Position of print image
≥ 20 mm lateral | ≥ 0 mm length

Technical data: BX 200

- Machine dimensions
L 2830 mm | W 1170 mm | H 1800 mm
- Weight 2000 kg
- Mechanical speed: up to 80 m/min
- Net performance depends on material, format, ...

Technical data: DP 200

- Set-up time per job < 60 Seconds
- Image resolution 360 dpi / monochrome
- Machine dimensions
L 1007 mm | W 3306 mm | H 1659 mm
- Weight 1500 kg

To be provided by the customer

- Compressed air requirement 10 Nm³/h
- Operating pressure 6 bar
- Compressed air supply extra sheet
- Electrical equipment 3 phases, 400 volt / N / PE, 50/60 Hz

KOLBUS AutoBox Ltd | Kolbus House | Blackburn Road | Townsend Industrial Estate | Houghton Regis LU5 5BQ | UK
T +44 (0) 1525 379359 | sales@autoboxmachinery.com
www.autoboxmachinery.com

KOLBUS GmbH & Co. KG | Osnabrücker Straße 77 | 32369 Rahden | Germany
T +49 577 171 - 0 | info@kolbus.de
www.kolbus.com

